

I N V E N T O R Y

---

LOVESTONED  
*Styling*

---

ABN . 15 814 924 720 | E. [STYLING@LOVESTONEDBRIDAL.COM](mailto:STYLING@LOVESTONEDBRIDAL.COM) | I. [@LOVESTONEDSTYLING](https://www.instagram.com/LOVESTONEDSTYLING) | PH. 0458 144 457

# Bamboo Seating



**PEACOCK BAMBOO LOUNGE**

\* INCULDES BASE CUSHIONS

**\$160 | Qty 1**



**BYRON BAMBOO LOUNGE**

\* INCULDES BASE CUSHIONS

**\$160 | Qty 1**



**BYRON BAMBOO 3 PIECE SET**

\* INCULDES BASE CUSHIONS

**\$120 | Qty 2**



**HAWAII BAMBOO 3 PIECE SET**

\* INCULDES BASE CUSHIONS

**\$120 | Qty 1**



**HAMPTON BAMBOO CHAIR SET x 2**

\* INCULDES BASE CUSHIONS

**\$60 | Qty 1**



**BAMBOO 2 SEATER LOUNGE**

\* INCULDES BASE CUSHIONS

**\$60 | Qty 1**



**PEACOCK CHAIR**

**\$80 | Qty 1**



**DOUBLE PEACOCK  
CHAIR**

1.8 x 1.8 M

**\$250 | Qty 1**



**BAR STOOL  
WHITE AND WOOD  
\$5 EACH | Qty 12**



**HAMPTONS BAMBOO  
BAR TABLES 1.2m**

\$60 FOR 1

\$120 FOR 2

\$180 FOR 3

\$240 FOR 4

# Bamboo & Wooden tables



**BAMBOO TABLE**  
FOR DRINKS/ GRAZING  
**\$50 | Qty 1**



**HAMILTON BAMBOO**  
**TABLE**  
(singing/cake/wishing well table)  
**\$40 EACH | Qty 1**



**BAMBOO & WOODEN**  
(singing/cake/wishing well table)  
**\$30 | Qty 1**



**RATTAN TABLE**  
(singing/cake/wishing well table)  
**\$30 | Qty 1**



**BALI BAMBOO**  
**COFFEE TABLE**  
**\$60 | Qty 1**



**HAMPTON BAMBOO COFFEE**  
(singing/cake/wishing well table)  
**\$30 EACH | Qty 3**



**BAMBOO & GLASS**  
**SIDE TABLE**  
**\$15 EACH | Qty 2**



**BAMBOO SIDE TABLE**  
**\$15 | Qty 1**



**BAMBOO SQUARE**  
**SIDE TABLE**  
**\$15 | Qty 2**



**GRINDER TABLE**  
**\*SUMMER**  
**\$60 | Qty 1**



**GRINDER TABLE**  
**\*AURORA**  
**\$60 | Qty 1**



# White Decor + Easels



**SML GRINDER TABLE  
SET OF 6 - WHITE**

TB1 - \$15 - 15cm

TB2 - \$20 - 20cm

TB3 - \$25 - 30cm

TB4 - \$30 - 35cm

TB5 - \$40 - 40cm

TB6 - \$50 - 45cm

**FOR THE LOT \$200**



**GRINDER TABLE  
WHITE**

**\$60 | Qty 2**



**WHITE BAMBOO TABLE  
(SIGNING TABLE)**

35x35x75

**\$20 | Qty 1**



**WHITE SIDE TABLE  
(DRINKS STATION/CAKE TABLE)**

**\$15 | Qty 3**



**BAILANESE 2.5m  
UMBRELLA FRINGED**

**\$60 | Qty 4**

**\*INCLUDES BASE**



**LINEN CANOPY +  
4 POSTER**

**\$300 | Qty 1**



**WHITE WOODEN BAR**

**\$200 | Qty 1**



**LOW WOODEN TABLES  
(75cm x 150cm)**

**\$30 EACH | Qty 6**



**WHITE TABLE (75 x 150)  
(DRINKS/GRAZING)**

**\$30 | Qty 5**



**WOODEN EASEL  
A - FRAME**

**\$30 | Qty 1**



**SQUARE WHITE  
WOODEN EASEL**

**\$30 | Qty 1**



**TALL WHITE  
METAL EASEL**

**Qty 2 - \$30**

**160cm(H) x 80cm(W) x 40cm(D)**



**TALL BLACK  
METAL EASEL**

**Qty 2 - \$30**

**160cm(H) x 80cm(W) x 40cm(D)**



**SQUARE BLACK  
WOODEN EASEL**

**\$30 | Qty 1**



# Rugs & Cushions



**RUG POPCORN**  
1.5m x 2.1m  
**\$70 EACH | Qty 5**



**RUG MOROCCAN LUNA**  
1.6 x 2.3m  
**\$100 | Qty 2**



**RUG MOROCCAN TORA**  
1.6 x 2.3m  
**\$100 | Qty 2**



**RUG PASTEL AZTEC**  
1.6 x 2.3m  
**\$60 | Qty 1**



**RUG MOROCCAN BRIDAL 1**  
2.5 x 1.3m  
**\$100 | Qty 1**



**RUG MOROCCAN BRIDAL 2**  
2 x 1m  
**\$80 | Qty 1**



**HARPER JUTE RUG**  
LGE 1.6 x 2.3m  
**\$60 - Qty 3**



**APRIL JUTE RUG**  
MED 1.3 x 1.8m  
**\$30 - Qty 3**



**LACY JUTE RUG**  
1.5M WIDE  
**\$30 EACH | Qty 1**



**JUTE CIRCLE RUG**  
1.3M  
**\$30 EACH | Qty 3**



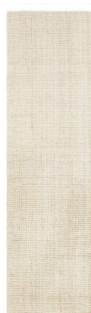
**WHITE CIRCLE JUTE RUG SML**  
1.5M WIDE | **\$30 | Qty 2**



**WHITE CIRCLE JUTE RUG LGE**  
2M WIDE | **\$60 | Qty 1**



**NATURAL JUTE AISLE RUNNER**  
4m x 80cm  
**\$100 - Qty 1**



**WHITE JUTE AISLE RUG**  
4m x 80cm  
**\$100 - Qty 1**





**EBONY RUG**  
1.6x 2.3M  
**\$60 EACH | Qty 2**



**FAX FUR THROW**  
CLAY  
**Qty 6 | \$10 EACH**



**RUBY RUG**  
2 x 3M  
**\$100 | Qty 1**



**WANDERING FOLK RUG**  
1.6 x 1.6M  
**\$50 | Qty 1**



**MOROCCAN SPELL RUG**  
290 x 200cm  
**\$150 | Qty 1**



**MOROCCAN GYPSY RUG**  
295 x 185cm  
**\$150 | Qty 1**



**ALBA RUG**  
3 x 2m  
**\$100 | Qty 1**



**ANDIE RUG**  
1.6 x 2.3M  
**\$60 | Qty 1**



**MOROCCAN SPELL CUSHION**  
45 x 45cm  
**\$8 | Qty 1**



**MOROCCAN GYPSY CUSHION**  
45 x 45cm  
**\$8 | Qty 1**



**CUSHIONS - CLAY**  
45 x 45cm  
**\$ 8 | Qty 10**



**MOROCCAN ZARA CUSHION**  
45 x 45cm  
**\$8 | Qty 1**



**MOROCCAN LOVE CUSION**  
45 x 45cm  
**\$8 | Qty 1**



**CUSHION TASSELED**  
35 x 35cm | 50 x 50cm  
**\$5 Qty 5 | \$8 Qty 5**





**CUSHIONS FRINGED**  
35 x 20cm  
**\$3 EACH | Qty 8**



**CUSHIONS MACRAME**  
25 x 25cm | 40 x 40cm  
**Qty 5 | Qty 5**  
**\$5 | \$8**



**MOROCCAN POUFS**  
1m x 1m  
**\$20 EACH | Qty 2**



**MOROCCAN CUSHION**  
35 x 35cm  
**\$8 EACH | Qty 20**



**LULU CUSHION**  
35 x 20cm  
**\$5 EACH | Qty 5**



**RAFFIA CUSHIONS**  
45 x 45 cm  
**\$8 EACH | Qty 6**



**RAFFIA CUSHIONS**  
60 x 60 cm  
**\$10 EACH | Qty 6**



**RAFFIA CIRCLE  
FLOOR CUSHIONS**  
60 x 60cm | 45 x 45cm  
**\$25 Qty 2 | \$15 Qty 2**

## Vases & Urns



**BRASS VASES**  
**SML QTY 27 | MED QTY 10**  
**\$3 EACH | \$5 EACH**



**BRASS VASES  
LARGE**  
**\$8 EACH | Qty 10**



**BRASS VASES  
XTRA LARGE**  
**\$15 EACH | Qty 3**



**EXTRA SMALL BUBBLE  
WHITE VASES**  
height 13cm | opening 2.5cm  
**\$3 | Qty 39**





CARLY WHITE  
CEMENT VASE  
height 10cm | opening 14cm  
**\$4 | Qty 4**



LILLY CERAMIC  
WHITE VASE  
height 10cm | opening 8cm  
**\$4 | Qty 24**



BILLIE CERAMIC  
WHITE VASE  
height 15cm | opening 4cm  
**\$4 | Qty 2**



MOON CERAMIC  
WHITE VASE  
height 13cm | opening 12cm  
**\$4 | Qty 3**



CORAL VASE  
height 17cm | opening 16cm  
**\$10 | Qty 2**



COREY WHITE  
CEMENT VASE  
height 12cm | opening 16cm  
**\$10 | Qty 2**



STELLA WHITE  
CEMENT VASE  
height 15cm | opening 12cm  
**\$10 | Qty 1**



CERAMIC WHITE VASES  
**\$5 | Qty 8**



URN 1  
102cm tall  
**X LGE \$80 | 2**



URN 2  
78cm tall  
**LGE \$80 | Qty 1**



URN 3  
80cm tall  
**LGE \$60 | Qty 2**



URN 4  
60cm tall  
**MED \$60 | Qty 1**



URN 5  
61 cm tall  
**MED \$40 | Qty 2**



URN 6  
60cm tall  
**SML \$40 | Qty 1**



URN 7  
24cm tall  
**SML \$40 | Qty 1**



CERMENT URN 8  
height 20cm | opening 12cm  
**SML \$30 | Qty 2**

# Lighting & Table Styling



TEA LIGHT CANDLES  
\$1 EACH | Qty 140



RAFFIA LAMP SHADE  
\* COMES WITH LIGHT  
\$40 EACH | Qty 10



BEADED CHANDELIER  
\* NO LIGHT  
60CM WIDE 90CM TALL  
\$60 EACH | Qty 2



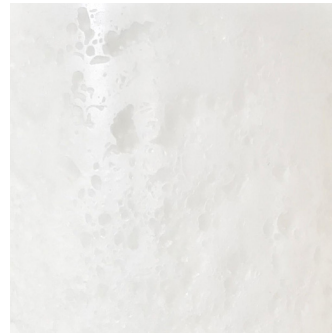
BEADED CHANDELIER  
\* NO LIGHT  
90CM WIDE 110CM TALL  
\$100 EACH | Qty 1



WARM WHITE  
CANDLE PILLARS  
7X7CM | 7X14CM | 7X21CM  
Qty | 36- \$2 | 25- \$3 | 18- \$4



TEXTURED WARM WHITE  
CANDLE PILLAR  
10X10CM  
\$5 EACH | Qty 16



TEXTURED WARM WHITE  
CANDLE PILLAR



TEXTURED WARM WHITE  
CANDLE PILLAR  
10X20CM  
\$8 EACH | Qty 20



GLASS VOTIVE  
S1 - 12x12 | S2 - 15x19 | S3 - 17x13 | S4 - 18x18 | S5 - 20x10  
QTY 30 - \$5 | 2 - \$8 | 4 - \$8 | 4 - \$8 | 30 - \$8  
\*INCLUDES CANDLES



FAIRY LIGHTS \* WARM  
\$50 PER 100M - QTY 6 (600M)  
FOR HIRE OF ALL LIGHTS  
+ INSTALL \$500



CRYSTAL  
CANDLE STICK HOLDERS  
\$5 EACH | Qty 53  
\*INCLUDES CANDLES STICKS



THIN GOLD CANDLESTICKS  
\$5 EACH | 48 AVAIL  
\*order will include a mix of  
24cm, 28cm and 34cm



BRASS  
CANDLE STICK HOLDERS  
\$5 EACH | Qty 14  
\*INCLUDES CANDLES STICKS



BLK RIMMED CANDLE  
HOLDER  
\$3 SML - QTY 31 | \$5 LGE - QTY 16  
\*INCLUDES CANDLES





WOODEN CANDLE  
PILLAR NO 1  
**\$5 EACH | Qty 6**  
\*INCLUDES CANDLES



WOODEN CANDLE  
PILLAR NO 2  
**\$10 EACH | Qty 4**  
\*INCLUDES CANDLES



WOODEN CANDLE  
PILLAR NO 3  
**\$10 EACH | Qty 5**  
\*INCLUDES CANDLES



WOODEN CANDLE  
PILLAR NO 4  
**\$10 EACH | Qty 6**  
\*INCLUDES CANDLES



WOODEN CANDLE  
PILLAR NO 5  
**\$5 EACH | Qty 3**  
\*INCLUDES CANDLES



WOODEN CANDLE  
PILLAR NO 6  
**\$10 EACH | Qty 6**  
\*INCLUDES CANDLES



WOODEN CANDLE  
PILLAR NO 7  
**\$10 EACH | Qty 4**  
\*INCLUDES CANDLES



WHITE CANDLE  
PILLARS  
**\$5 EACH | Qty 7**  
\*INCLUDES CANDLES



HERRINGBONE BASKET  
**\$5 | QTY 2**



WOVEN BASKET  
**\$5 | Qty 3**



SEAGRASS BASKET  
**\$5 | Qty 3**



BAMBOO LANTERN  
HOLDS CANDLES OR FLOWERS  
**\$25 EACH | Qty 6**



CERAMIC WHITE  
MEDIUM CLAM SHELLS  
**\$25 | Qty 2**



LARGE SHELLS  
**\$25 | Qty 2**



SPIKE SHELLS  
**\$10 | Qty 3**



CERAMIC WHITE  
LARGE CLAM SHELL  
**\$50 | Qty 2**



# Signage



**WISHING WELL**  
Flat lid\*white or gold writing  
\$40 | Qty 2



**WHITE  
TABLE NUMBERS A5**  
\$5 | Qty 12 TABLES



**WHITE FROSTED & GOLD  
FLORAL TABLE NUMBERS**  
\$5 | Qty 10 TABLES



**SNAP IT, STICK IT, SIGN IT**  
SIGN A4  
\$5 | Qty 1



**FAN YOURSELF**  
SIGN A4  
\$5 | Qty 1



**BAR OPENS AFTER CEREMONY**  
SIGN A4  
\$5 | Qty 1



**GUEST BOOK**  
SIGN A4  
\$5 | Qty 1



**PETAL STATION**  
SIGN A4  
\$5 | Qty 1

# Grazing & Serving ware



WOODEN SERVING  
BOARD  
\$5 EACH | Qty 2



JODHPUR BOWL  
\$10 EACH | Qty 4



PROVENCE ROUND  
BOARD 57x77x4cm  
\$15 EACH | Qty 4



PLATTER MARBLE  
\$8 EACH | Qty 15



PLATTER MARBLE  
\$8 EACH | Qty 8



WOODEN STAND  
\$5 EACH | Qty 4



HYACNITH STAND  
\$8 | Qty 1



METAL CUBE TO RAISE  
MARBLE PLATTER  
\$5 EACH | Qty 4



PLATTER MORROCAN  
GOLD  
\$10 | Qty 1



CERAMIC WHITE GOLD  
RIMED CAKE STAND  
30cm x 28cm x 11.8cm (H)  
\$8 | Qty 1



CERAMIC WHITE GOLD  
RIMED BOWL  
15cm x 14cm x 6.4cm (H)  
\$2 EACH | Qty 6



CHEESE KNIVES  
SILVER MARBLE  
\$4 SET | Qty 2



CHEESE KNIVES  
GOLD MARBLE  
\$4 SET | Qty 2



CHEESE KNIVES  
PINEAPPLE GOLD  
\$4 FOR SET OF 4



CHEESE KNIVES GOLD  
\$3 PER SET | Qty 2

# Drink & Crystalware



CRYSTAL CUT  
CHAMPAGNE GLASS  
**\$3 EACH | Qty 37**



CRYSTAL CUT  
CHAMPAGNE COUPE  
**\$3 EACH | Qty 21**



CRYSTAL CUT  
WINE GLASS  
**\$3 EACH | Qty 50**



CRYSTAL CUT  
WATER/WHISKY GLASS  
**\$3 | Qty 45**



CRYSTAL CUT  
DECANTERS  
**\$15 EACH | Qty 4**



CRYSTAL CUT  
DISPENSER 10L  
**\$30 | Qty 2**



DRINKS COOLER  
20L TUB  
**\$5 EACH | Qty 4**



DRINKS COOLER  
30 L TUB  
**\$10 EACH | Qty 4**



WINE COOLER TUB  
**\$5 EACH | Qty 4**



BRASS BOTTLE OPENER  
**\$2 EACH | Qty 8**



CRYSTAL PLATTER  
**\$10 | Qty 3**



CRYSTAL BOWL  
SMALL  
**\$3 | Qty 7**



CRYSTAL BOWL  
SCALLOPED  
**\$5 | Qty 2**



CRYSTAL BOWL FLUTE  
**\$5 | Qty 3**



CRYSTAL BOWL LINED  
**\$10 | Qty 2**



CRYSTAL BOWL  
DIAMOND  
**\$10 | Qty 1**



# Tableware



CUTLERY GOLD  
**16 GOLD**  
\$4 PER SET



CUTLERY SILVER  
**16 GOLD | 16 SILVER**  
\$4 PER SET



BLUSH NAPKIN  
\$4.5 EACH | QTY 6  
\*INCLUDES DRY CLEANING



WHITE NAPKIN  
\$4.5 EACH | QTY 6  
\*INCLUDES DRY CLEANING



MUSLIN WHITE NAPKIN  
\$1 PER NAPKIN  
**Qty | 120**



MUSLIN TABLE  
4M RUNNERS  
**\$3 | Qty - 30**



WHITE LINEN TABLE CLOTH  
3.9 x 2.6m  
\$45 EACH | **Qty 2**



SAND LINEN TABLE CLOTH  
3.9 x 2.6m  
\$45 EACH | **Qty 1**



DINNER PLATE LIPPED  
30 x 30cm  
**\$3 EACH | Qty 10**



PLACEMAT RAFFIA  
40 x 40cm  
**\$3 EACH | Qty 150**



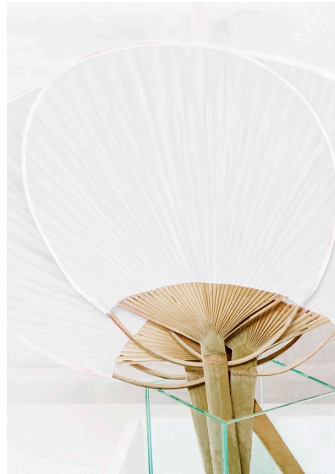
PLACEMAT HYACNITH  
30 x 30cm  
**\$3 EACH | Qty 230**

# Chairs & Summer

\* PLEASE NOTE THESE CHAIRS ARE SUBHIRED THROUGH OUR CHOSEN SUPPLIER AND FOR OUR CEREMONY PACKAGES ONLY. WE CAN ONLY PROVIDE CHAIRS FOR OUR CEREMONIES PACKAGES, NOT RECEPTION PACKAGES. CEREMONIES WE ONLY CATER FOR 40 CHAIRS. IF YOU WISH TO HIRE MORE FOR YOUR CEREMONY OR FOR YOUR RECEPTION PLEASE LET US KNOW, TO ARRANGE THIS. IF YOU WISH TO HIRE DIY - WE RECOMMEND GOING DIRECT THROUGH OUR SUPPLIER. PLEASE CONTACT US ABOUT THIS FOR FURTHER INFORMATION.



WOVEN FANS CREAM  
SUMMER MONTHS TO BE  
PLACED ON CHAIRS  
**\$2.00 EACH | Qty 165**



WHITE PAPER FANS  
SUMMER MONTHS TO BE  
PLACED ON CHAIRS  
**\$2.00 EACH | Qty 90**



WHITE PAPER PARAOLS  
SUMMER MONTHS  
**\$3.00 EACH | Qty 20**



BAMBOO WHITE  
**\$12 PER CHAIR  
QTY | 50**



TIMBER FOLDING CHAIR  
**COST \$7 PER CHAIR  
QTY | 100**



BAMBOO NATURAL  
**\$12 PER CHAIR  
QTY | 100**



HAMPTON CHAIR - SAND  
**\$12 PER CHAIR  
QTY | 120**



WHITE METAL  
BENTWOOD CHAIR  
**QTY | 120 | COST \$10**





2 X ADJUSTABLE LARGE METAL STANDS  
QTY - 2 STANDS | \$85 EACH OR \$150 FOR PAIR



MIXTURE OF WHITE URNS SET AS ARBOUR  
\$350 - SET OF 6 PIECES



WHITE 4 POSTER ARBOUR / COCKTAIL COVERING  
QTY - 2 | 2 x 2 m - QTY 3 | 3 x 3M  
\$250 \$350



CIRCULAR ARBOUR  
WHITE or GREY  
\$200



ALL WHITE WOODEN DIAMOND ARBOUR  
\$200



WOODEN TRIANGLE ARBOUR  
\$200



### **MINIMUM SPEND**

There is a \$200 minimum spend for all prop hire (ex.delivery)

#### ***Hire/ Events***

\$250 – \$500 bond is required – Pending amount hired, which will be returned in full pending damage/loss/ and cleaning needed.

#### ***Weddings***

\$1000 bond is required, which will be returned in full pending damage/loss/cleaning

**\* See damage/loss header**

### **DIY HIRE PERIOD**

Hire period is up to 4 days (incl. weekend).

Additional fees apply for late return or extended hire over 4 days

### **PICK UP**

Collection is available from our WAREHOUSE located in Caringbah 44 woodfield bvd 2229.

Please note that if you are picking up any items that are of larger scale that they must be collected in a van or truck. We will not allow them to be transported via ute or attached to the top of a car, due to possible damage and the elements of weather. If we are not happy with the mode of transport upon collection we will not allow them to leave the premises.

Please understand that this is only due to we take great pride in the stock we have collected and each item is a one off piece that if damaged will exceed the cost of your bond. Please note however if the hire of our large white urns we don't offer DIY for this they must be delivered and unpacked by our staff.

### **DELIVERY**

Delivery starts at \$150 within the Sydney CBD ( 1.5hrs from our location)  
and will be determined by your location and rtn pickup.

Styling + setup not included in delivery fee unless otherwise stated.

For a delivery quote, please email us with what items you require, the date & delivery times, as well as the venue/location for delivery and collection.

### **PAYMENT**

30% payment is required to secure booking or can be paid in full if desired. 50% deposit will be taken for bookings less than 6 months out from requested date. Full payment due if booking made 3 months prior to event. All remaining payments are to be made 2 months prior to event. Payment can be made electronically via EFT, or sent via Squareinc. Invoices will be sent by email with payment details and we will confirm receipt of payment by email. If you choose to pay via Credit card via our payment system you will incur a 2.2% cc surcharge fee.

### **REFUNDS/EXCHANGE**

Exchange of props is possible, subject to availability and notice period.

Deposits are non refundable once paid. We do not offer refunds once payment has been made.

### **DAMAGE/LOSS**

Any damage or loss of props or furniture MUST be paid for by the hirer at the original purchase fee, this will be deducted from your bond and if the fee exceeds the cost of the bond we will discuss further.

A cleaning fee may be incurred for rugs if required, which will also be deducted from your bond.